



CONTINENTAL DIAMOND TOOL  
CORPORATION

# PRECISION POLISHING FILM



MIRROR FILM    **▶**    LAPPING FILM    **▶**    DIAMOND LAPPING FILM

*We're setting the new standard.*

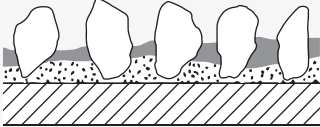
# MIRROR FILM

# LAPPING FILM

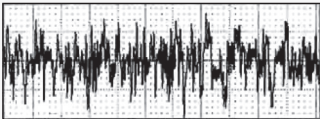
## What is Mirror Film?

Fine graded abrasive grains are coated uniformly on the polyester film by the electro-static coating technique. Mirror Film has the superior sanding capability and durability.

### Mirror Film Enlarged to Show Texture:



### Mirror Film Surface Roughness



## Roll Applications

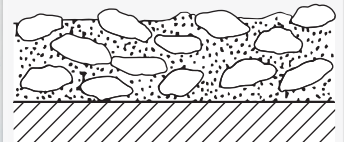
- A variety of roll and shaft materials
- Flat displays
- Commutator shafts of micro motors
- Magnetic head and disk



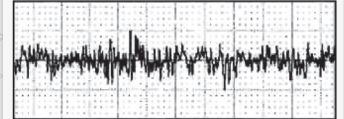
## What is Lapping Film?

Micron graded abrasive grains are uniformly distributed in the resin adhesive and coated on the polyester film. Lapping Film provides consistent, accurate and high quality finishes.

### Lapping Film Enlarged to Show Texture:

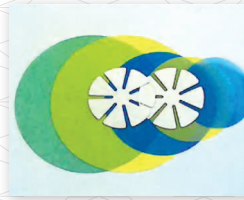


### Lapping Film Surface Roughness



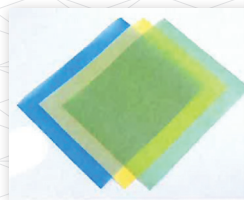
## Disc Applications

- Plastic lenses
- Optical devices and fibers
- Magnetic heads and disks
- A variety of painted surfaces



## Sheet Applications

- Print circuit boards
- Optical devices and fibers



## Mirror Film Belt Applications

- Flat displays
- Print circuit boards
- A variety of painted surfaces

## BACKING MATERIAL

Polyester film's uniform thickness, smooth surface, and strength provides strong resistance to pulling and tearing forces, with less elasticity. Various thicknesses are available, starting at a minimum of 25 microns.

## ABRASIVE MINERALS/GRIT

A variety of abrasive mineral types are available, including Aluminum Oxide, Silicon Carbide and Diamond. We also offer a wide variety of grits from 100 to 0.1 microns in diameter.

## DIAMOND LAPPING FILM

This film-backed abrasive is particularly suitable for precision finishing of super hard material, hard-to-finish materials such as ceramic and ferrite materials, fragile materials, and new generation material, etc.

## Who is CDT?

CDT is a family owned company located in New Haven, Indiana. Continental Diamond Tool's reputation as a leading-edge manufacturer of Diamond and CBN wheels is the result of a disciplined commitment to excellence that has led the company since 1973.

## Quality

Our engineers are specialists in their field and take pride in maintaining the highest quality standards. We produce all of our wheels in-house under a stringent quality control system. We manufacture our wheels using CNC machines to make sure we maintain a consistent product at the highest quality, wheel after wheel.

## Custom Manufacturing

Continental Diamond Tool custom manufactures products tailored to our customers' specific needs. We boast a full machine shop with skilled technicians and an extensive inventory of raw materials. This enables us to supply an assortment of superabrasive products with the industry's best lead time.

## Precision Products

Our industry expertise gives our superabrasive wheels and tools their unique precision. Our state-of-the-art equipment and highly skilled experts are supported by decades of experience. The result is a finished product unmatched in quality and consistency.

## Personalized Tech Support

From prototype to production, replacement tooling to improving your existing operations, our cutting-edge tech staff can help you overcome the obstacles to increase productivity and success.

## Competitive Pricing

We've maintained our position in the marketplace by meeting our customers' needs and producing the highest quality superabrasive products at competitive prices.

# SUMMARY OF PRODUCTS

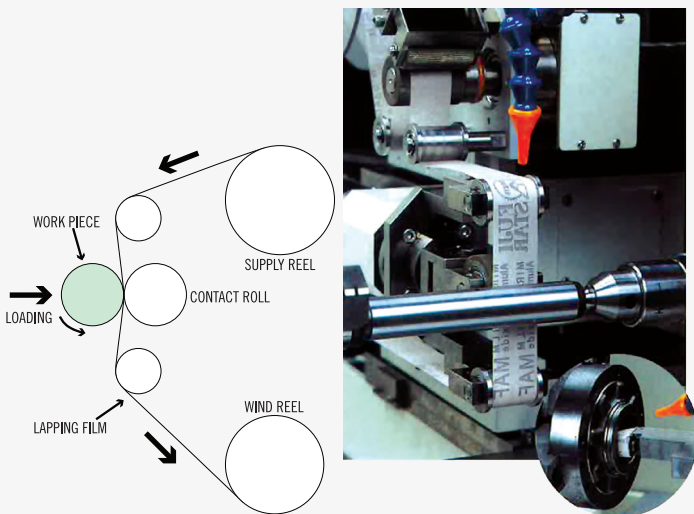
| Product          | Mineral | Backing | Micron/Grade |       |      |      |      |      |      |      |      |     |     |     |     |     |     | Form |      |       |      |   |
|------------------|---------|---------|--------------|-------|------|------|------|------|------|------|------|-----|-----|-----|-----|-----|-----|------|------|-------|------|---|
|                  |         |         | 0.1          | 0.5   | 1    | 2    | 3    | 5    | 9    | 12   | 15   | 20  | 30  | 40  | 60  | 80  | 100 | Roll | Disc | Sheet | Belt |   |
|                  |         |         | 20000        | 10000 | 8000 | 6000 | 4000 | 3000 | 2000 | 1500 | 1000 | 800 | 600 | 400 | 320 | 240 | 120 |      |      |       |      |   |
| Mirror Film MAF  | WA      | 75μ     |              |       |      |      |      |      |      | ○    |      | ○   | ○   | ○   | ○   | ○   | ○   | ○    | ○    | ○     | ○    |   |
|                  |         | 100μ    |              |       |      |      |      |      |      | ○    |      | ○   | ○   | ○   | ○   | ○   | ○   |      | ○    | ○     | ○    | ○ |
|                  |         | 125μ    |              |       |      |      |      |      |      | ○    |      | ○   | ○   | ○   | ○   | ○   | ○   | ○    |      | ○     | ○    | ○ |
| Mirror Film MCF  | CC      | 75μ     |              |       |      |      |      |      |      |      |      |     |     |     |     |     |     |      | ○    | ○     | ○    | ○ |
|                  |         | 100μ    |              |       |      |      |      |      |      |      |      |     |     |     |     |     |     |      | ○    | ○     | ○    | ○ |
|                  |         | 125μ    |              |       |      |      |      |      |      |      |      |     |     |     |     |     |     |      | ○    | ○     | ○    | ○ |
| Mirror Film VAF  | WA      | 125μ    |              |       |      |      |      |      | ○    | ○    | ○    | ○   | ○   | ○   | ○   | ○   |     | ○    | ○    | ○     | ○    |   |
| Mirror Film VCF  | CC      | 125μ    |              |       |      |      |      |      |      |      | ○    | ○   | ○   | ○   | ○   |     |     | ○    | ○    | ○     | ○    |   |
| Mirror Film SAF  | WA      | 125μ    |              |       |      |      |      |      | ○    | ○    |      | ○   | ○   | ○   | ○   |     |     | ○    | ○    | ○     | ○    |   |
| Mirror Film DAF  | WA      | 100μ    |              |       |      |      |      |      |      | ○    |      | ○   | ○   | ○   | ○   |     | ○   | ○    | ○    | ○     | ○    |   |
| Mirror Film DCF  | CC      | 100μ    |              |       |      |      |      |      |      |      |      | ○   | ○   | ○   | ○   | ○   |     | ○    | ○    | ○     | ○    |   |
| Mirror Film FAF  | WA      | 75μ     |              |       |      |      |      |      | ○    | ○    |      | ○   | ○   | ○   | ○   |     |     | ○    | ○    | ○     | ○    |   |
| Mirror Film SDF  | D       | 100μ    |              |       |      |      |      |      |      | ○    | ○    |     | ○   | ○   | ○   | ○   |     | ○    | ○    | ○     | ○    |   |
| Lapping Film LWF | WA      | 25μ     | ○            | ○     | ○    | ○    | ○    | ○    | ○    | ○    | ○    | ○   | ○   | ○   | ○   | ○   |     | ○    | ○    | ○     | ○    |   |
|                  |         | 75μ     | ○            | ○     | ○    | ○    | ○    | ○    | ○    | ○    | ○    | ○   | ○   | ○   | ○   | ○   |     | ○    | ○    | ○     | ○    |   |
| Lapping Film LGF | GC      | 75μ     |              |       | ○    | ○    | ○    | ○    | ○    | ○    |      | ○   | ○   |     |     |     |     | ○    | ○    | ○     | ○    |   |
| Lapping Film LCF | CC      | 25μ     |              |       |      |      |      |      | ○    | ○    |      | ○   |     | ○   |     |     |     | ○    | ○    | ○     | ○    |   |
|                  |         | 75μ     |              |       |      |      |      |      | ○    | ○    |      | ○   |     | ○   |     |     |     | ○    | ○    | ○     | ○    |   |
| Lapping Film LDF | D       | 25μ     | ○            | ○     | ○    | ○    | ○    | ○    | ○    |      | ○    |     | ○   |     | ○   |     |     | ○    | ○    | ○     | ○    |   |
|                  |         | 75μ     | ○            | ○     | ○    | ○    | ○    | ○    | ○    |      | ○    |     | ○   |     | ○   |     | ○   |      | ○    | ○     | ○    | ○ |

Minerals: WA = White Aluminum Oxide D = Diamond  
CC = Carborundum GC = Green Carborundum

Backing: 25μ = 1MIL 100μ = 4MIL  
75μ = 3MIL 125μ = 5MIL

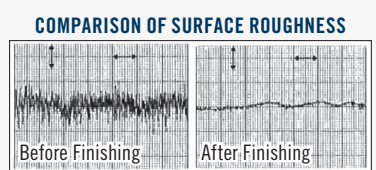
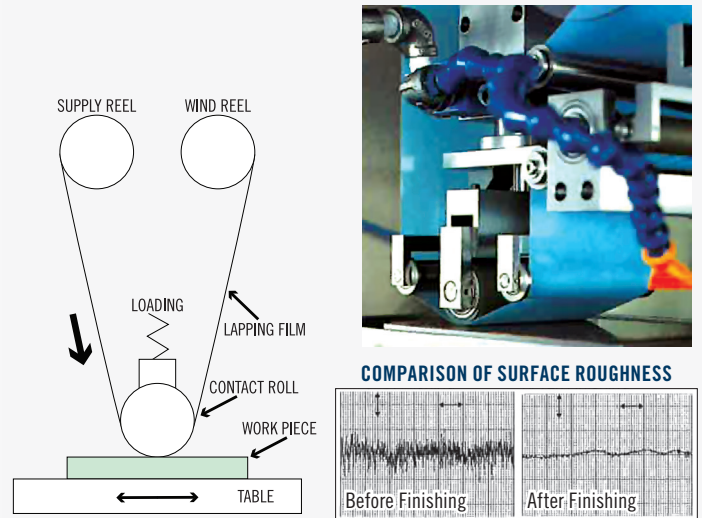
## INSIDE AND OUTSIDE DIAMETERS OF SHAFT

Fresh abrasive is continuously fed at a constant speed, resulting in a uniform finish. The super-finisher has two finishing modes, one with oscillation, and one without it, providing a straight line finish or cross-hatched finish.



## IMPROVING SURFACE FLATNESS

Lapping film is very flexible, with a fine grit surface that prevents dust and maintains a clean working environment. It can be used both in dry and wet conditions, and the type of film selected will provide the precision you require.

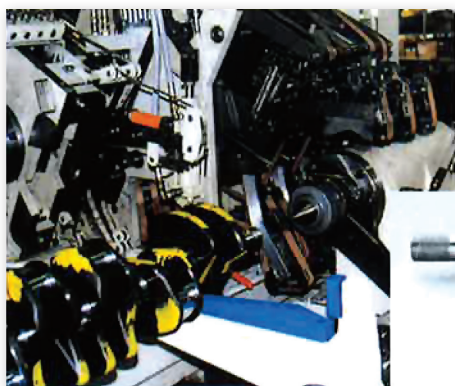


*We're setting the new standard.*



**CONTINENTAL DIAMOND TOOL  
CORPORATION**

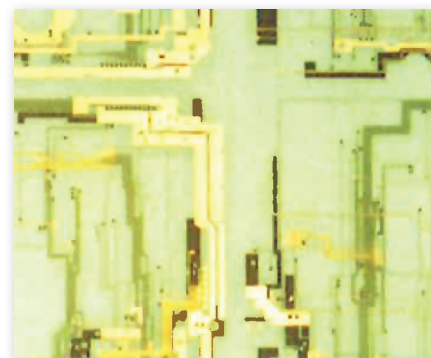
# PRECISION POLISHING FILM



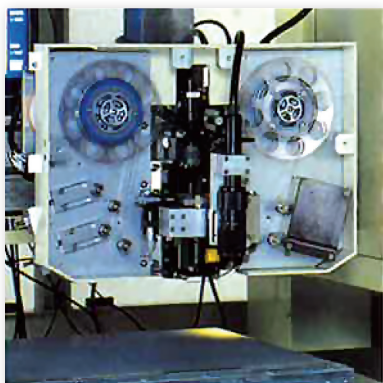
**LAPPING OF CRANKSHAFT**



**CRANKSHAFT, CAMSHAFT**



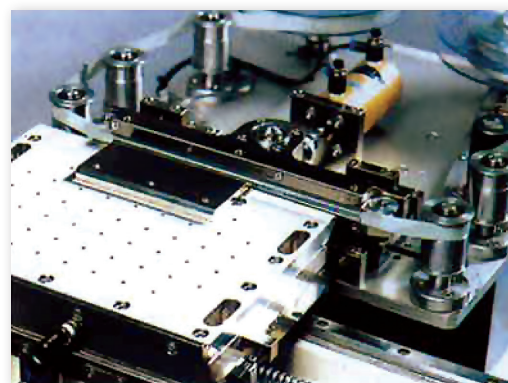
**PRINT CIRCUIT BOARD**



**LIQUID CRYSTAL DISPLAY**



**FIBER OPTICS**



**SANDING OF GLASS BOARD FACE**

## FOR MORE INFORMATION:

**Phone:** 260-493-1294  
**Toll Free:** 800-443-6629  
**Fax:** 260-749-7326  
**Email:** [info@cdtusa.net](mailto:info@cdtusa.net)

P.O. Box 126  
1221 Hartzell Street  
New Haven, IN 46774-0126  
[www.cdtusa.net](http://www.cdtusa.net)

*We're setting the new standard.*